

DAMN^o

MAY – JUNE 2018

68

Special
Water

JORIS LAARMAN
JUNYA ISHIGAMI
DAN GRAHAM
RIKKERT PAUW
JULIAN SCHNABEL
MASS DESIGN GROUP
RACHEL WHITEREAD
BJÖRN STEINAR BLUMENSTEIN
NINA YASHAR
LUFTWERK
RAUMLABOR
LUCILE VIAUD

MAY – JUNE 2018 / OFFICE OF DISPOSAL, 9000 GENT X - P509314

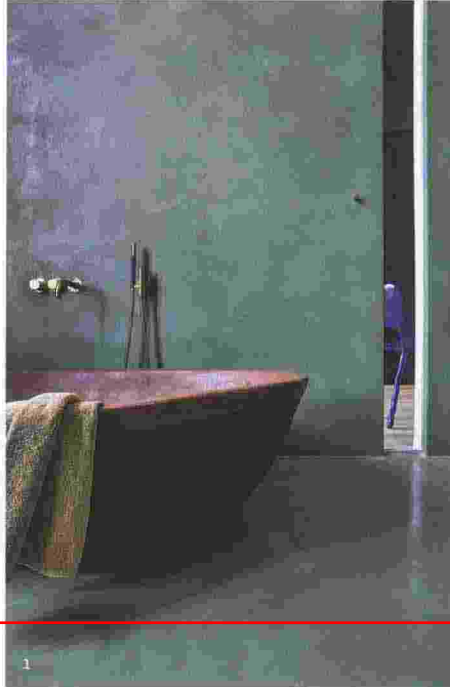
ON CONTEMPORARY CULTURE



EUR 12€ UK 11€

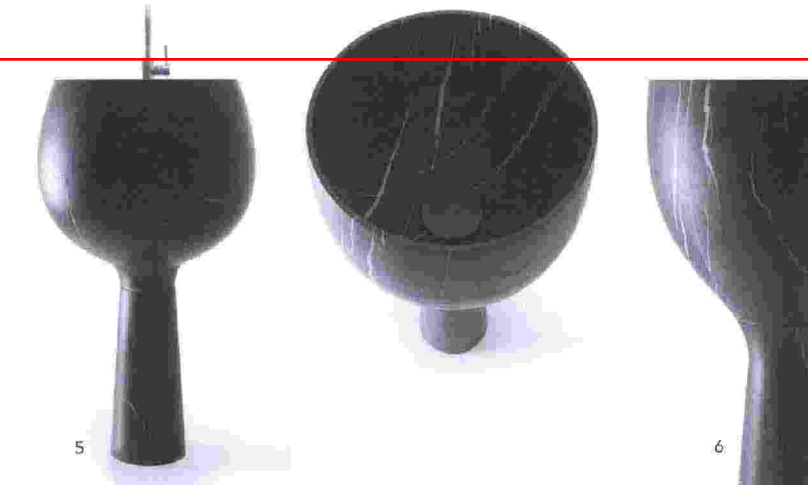
1/2. STUDIO LOHO

Newcomer Studio LoHo is from Belgium and presented its innovative clay baths during last month's Milan Design week at Palazzo Litta. "Why should bathing be boring?" ask the designers Jo Hoeven & Karel Loontjens, in an attempt to creatively reinvent bathing as the ultimate relaxation. "Bathing is the ultimate relaxation. Yet while there's a wide range of different sofas and loungers to luxuriously recline and relax in, when it comes to baths the choice is much more limited." Studio LoHo's clay baths express the wish to change that. Clay offers more freedom in the choice of colour. And with its many benefits, it is an innovative material for the bathroom. The clay baths are installed at Kind of OJ, an art & design gallery-showroom-lab run by Hoeven in the Belgian city of Bruges. kindofoj.com studioloho.com



3/4. EVER LIFE DESIGN

Ever Life Design presented two new products at the Salone del Bagno that are designed for bathroom but are equally at home in a range of different contexts and spaces, from private residences to contract sectors like hospitality. Both Roll, a versatile waterproof seat designed by Diego Cisi, and the multifunctional accessories of the wall-mounted Ring collection designed by Monica Graffeo, can be easily inserted into a total living space. The approach of the brand, as well of the designers, is to create furniture and accessories suitable for all targets and with an emphasis on multifunctional versatility. The results convey a light and carefree design, without losing the features of strength and safety that are associated with the company. everlifedesign.it



5/6. KREOO

As a tribute to the centuries-old Italian marble craft tradition, two new free-standing washbasins have been designed by Enzo Berti for Kreoo. As Scarlet (5) and Amber (6) illustrate, the project was inspired by the soft, clean curves of wine glasses. Thanks to the great expertise of the brand in marble manufacturing, the washbasins have a strong visual impact, yet an elegant and classic allure. Functional sculptures; Scarlet has a wider and rounded mouthpiece, evoking the majesty and solidity of a red wine glass like the Burgundy, Amber shows a more elongated form, reminiscent of the elegant shape and enchanting amber colour of a white wine glass. Both designs feature a conical base, with light variation. Sculpted from solid marble, these washbasins are created by the union of two separate pieces, to accommodate both efficient manufacturing and ensure technical stability. kreoo.com

Ritaglio stampa ad uso esclusivo del destinatario, non riproducibile.